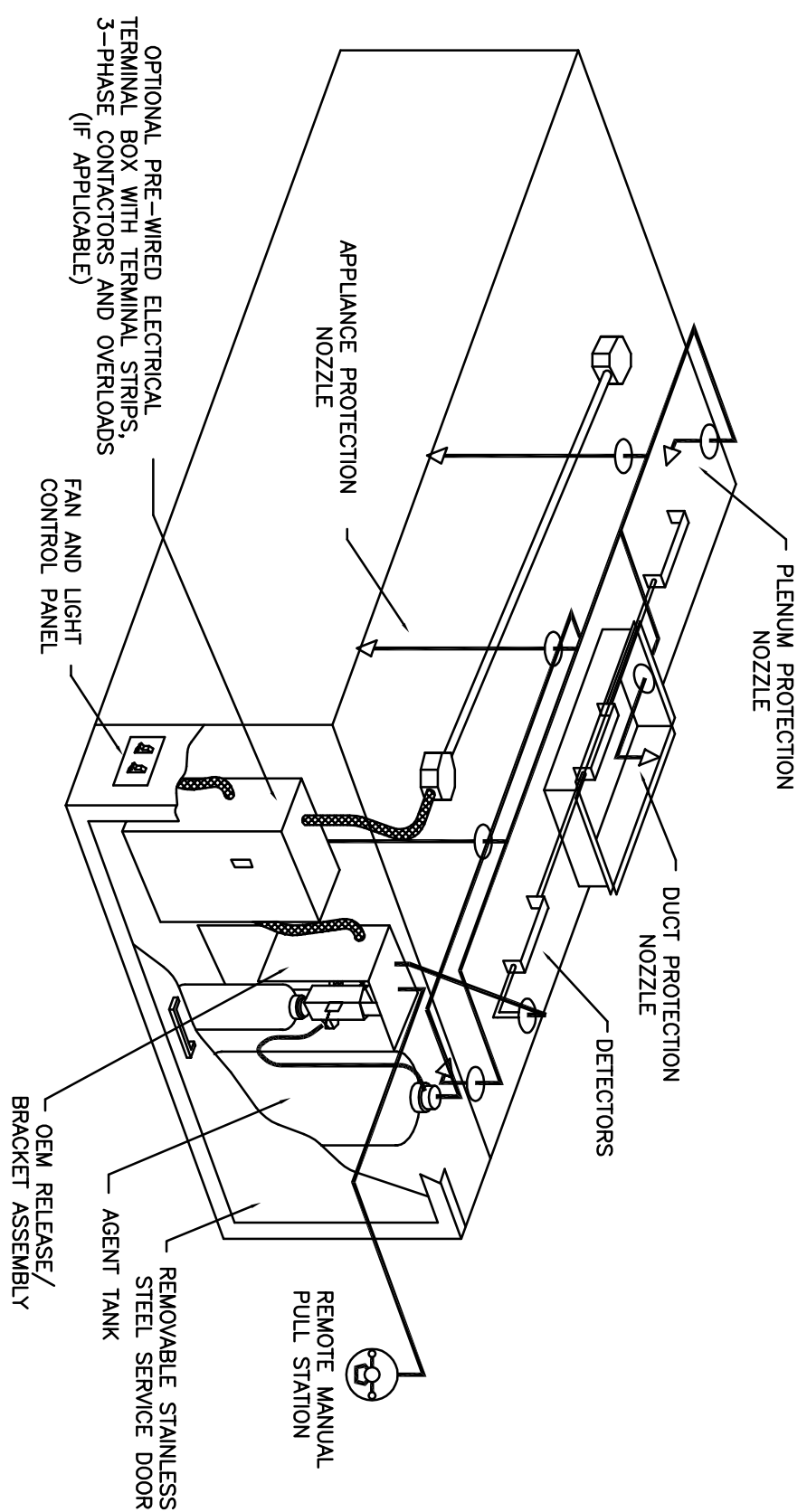
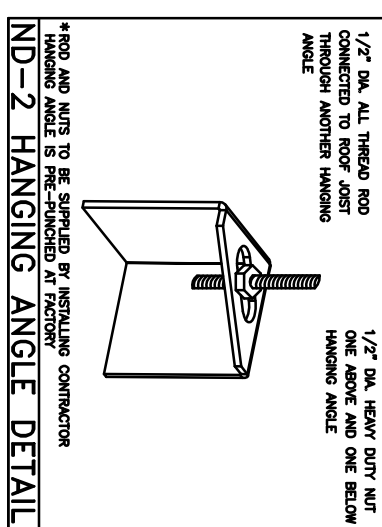




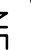
SECTION VIEW - MODEL 5424ND-2-PSP-F
Back-to-Back Configuration



TYPICAL ANSUL R-102 SYSTEM LAYOUT



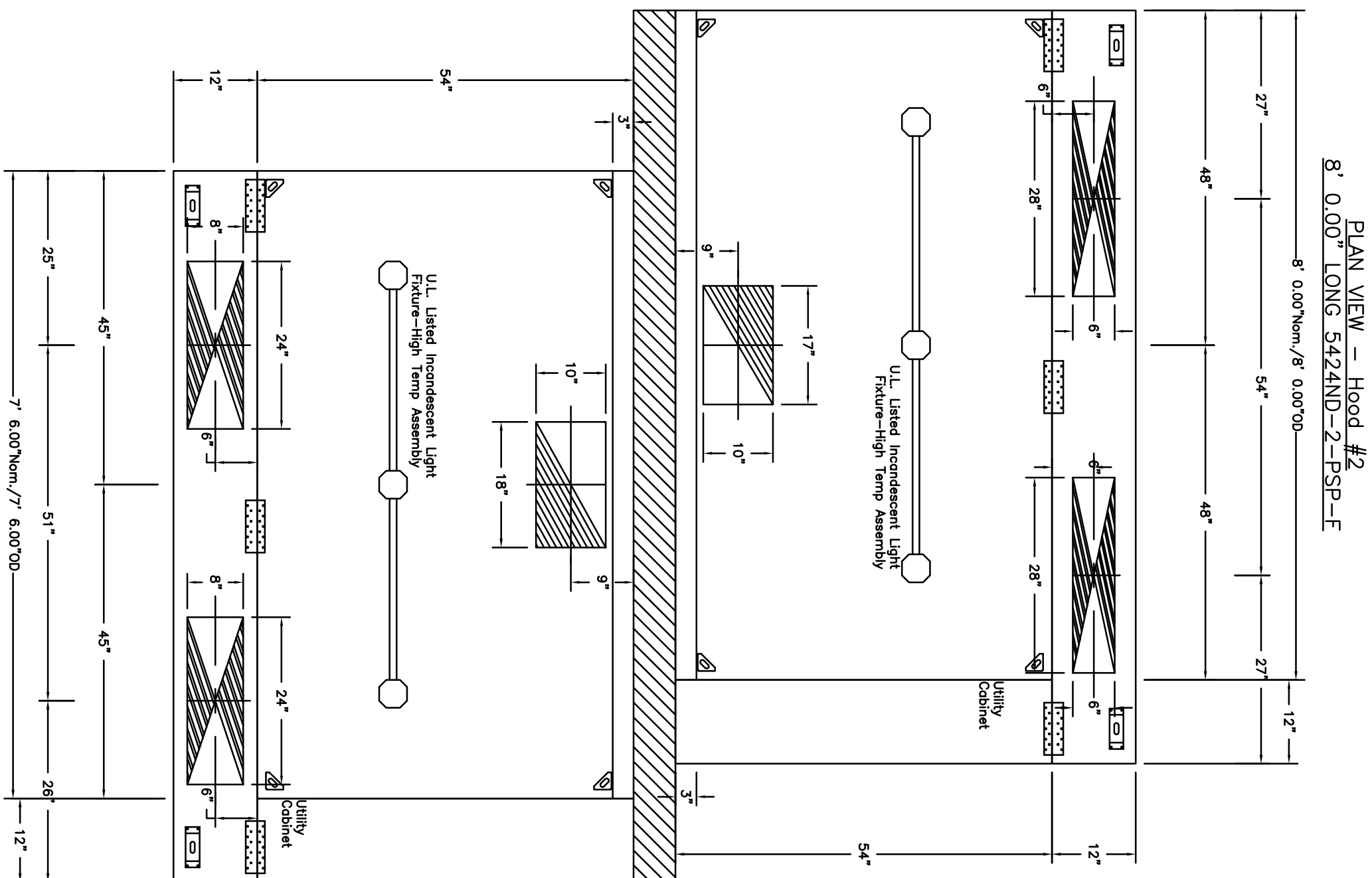
CAPTIVE-AIRE HOODS ARE
BUILT IN COMPLIANCE WITH

NFPA #96

UL 710 & ULCTO STANDARDS
E.T.L. LISTED 3054804-001

ETL LISTING DESCRIPTION BLOCK
THE CAPTIVE AIRE MODEL
ND HAS BEEN E.T.L.
TESTED, LISTED, AND
APPROVED TO EXHAUST
A MINIMUM OF 150/200/250 CFM
PER LINEAR FOOT OVER
450/600/700 DEGREE COOKING
EQUIPMENT, RESPECTIVELY.



REVISIONS	
DESCRIPTION	DATE:
Δ	
Δ	
Δ	
Δ	

CAPTIVEAIR
HOUSTON OFFICE
www.captiveaire.com

2626 South Loop West, Suite 620, Houston, TX, 77054 PHONE: (713) 839-9944 FAX: (713) 839-9945 EMAIL: reg46@captiveaire.com

Demeris BBQ #1359060
HOUSTON, TX

DATE: 6/7/2011

Phone:
1359060



DRAWN BY: GAF

SCALE: 1/10

MASTER DRAWING

SHEET NO.

2

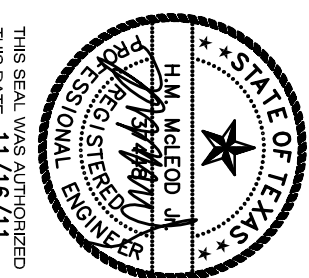
ISSUE	DATE	DESCRIPTION
	06/29/11	PERMIT / CONSTRUCTION
	10/13/11	PERMIT / CONSTRUCTION
	11/16/11	CITY COMMENTS

PROJECT:

CONSTRUCTION FOR Demeris Barbecue

1702 West Loop North
Houston, Texas 77092

ENGINEER:



H.M. McLEOD, P.E.
4727 MERVIN ST. SUITE B
HOUSTON, TEXAS 77027
OFFICE: (713) 961-2699
FAX: (713) 961-6691
Cell: (713) 806-1646
Firm: 7613
H. M. McLeod, P.E. #F-3679
© 2011 H.M. McLeod, P.E.

DATE	6/17/11
PROJECT #	11141
SCALE	as noted
DRAWN BY	---

SHEET NAME:

HOOD DETAILS

SHEET NUMBER:

M-5